



Customer: Silver Owl CBD  
 Customer Sample ID: D8 Disposable  
 Laboratory Number: 20K0423-03

# Cannabinoid Profile

Extraction Technician: DF  
 Analytical Chemist: SH

Extraction Date(s)	Analysis Date(s)
11/20/2020	11/21/2020

Cannabinoids (HPLC)		Results	
	LOD (mg/g)	%	mg/g
Cannabidivarin (CBDV)	<0.60		
Cannabidiolic Acid (CBD-A)	<0.60		
Cannabigerolic Acid (CBG-A)	<0.60		
Cannabigerol (CBG)	<0.60		
Cannabidiol (CBD)	<0.60		
Tetrahydrocannabivarin (THCV)	<0.60		
Cannabinol (CBN)	<0.60		
delta 9-Tetrahydrocannabinol (THC)	<0.60		
delta 8-Tetrahydrocannabidol		88.35	883
Cannabichromene (CBC)	<0.60		
delta-9-Tetrahydrocannabinolic Acid (THC-A)	<0.60		
<b>Cannabinoids Total</b>		<b>%</b>	<b>mg/g</b>
Max Active THC		0.00	0.00
Max Active CBD		0.00	0.00
T.Active Cannabinoids		0.00	0.00
Total Cannabinoids		88.30	883.00

Following USDA guidelines on uncertainty, Altitude Consulting's uncertainty are calculated for CBDa and CBD at +/- 4%. The uncertainty for THCa and THC are +/- 5%. This implies the range for a 10% value of CBD to be 9.6-10.4%. The uncertainty range for a 0.30% value of THC would be 0.28-0.32%. The measurement uncertainty is calculated using a coverage factor of 2.

## Cannabinoid (mg/g)



<span style="color: blue;">■</span> Cannabichromene (CBC)	<span style="color: orange;">■</span> Cannabidiol (CBD)	<span style="color: teal;">■</span> Cannabidiolic Acid (CBD-A)	<span style="color: red;">■</span> Cannabidivarin (CBDV)	<span style="color: purple;">■</span> Cannabigerol (CBG)
<span style="color: yellow;">■</span> Cannabigerolic Acid (CBG-A)	<span style="color: lightblue;">■</span> Cannabinol (CBN)	<span style="color: lightcoral;">■</span> delta 8-Tetrahydrocannabidol	<span style="color: green;">■</span> delta 9-Tetrahydrocannabinol (THC)	<span style="color: pink;">■</span> delta-9-Tetrahydrocannabinolic Acid (THC-A)
<span style="color: purple;">■</span> Tetrahydrocannabivarin (THCV)				

Reporting Limits will vary based on sample extraction weight used for the analysis.  
 Altitude Consulting, LLC utilizes NIST traceable Reference Standards and Certified Reference Material to calibrate analytical instruments along with proven analytical methods. The methods are applied in the most ethical manner following good laboratory practice guidelines. The results of this report are based solely on the sample submitted and cannot be reproduced.



Customer: Silver Owl CBD  
 Customer Sample ID: D8 Syringe  
 Laboratory Number: 20K0423-02

# Cannabinoid Profile

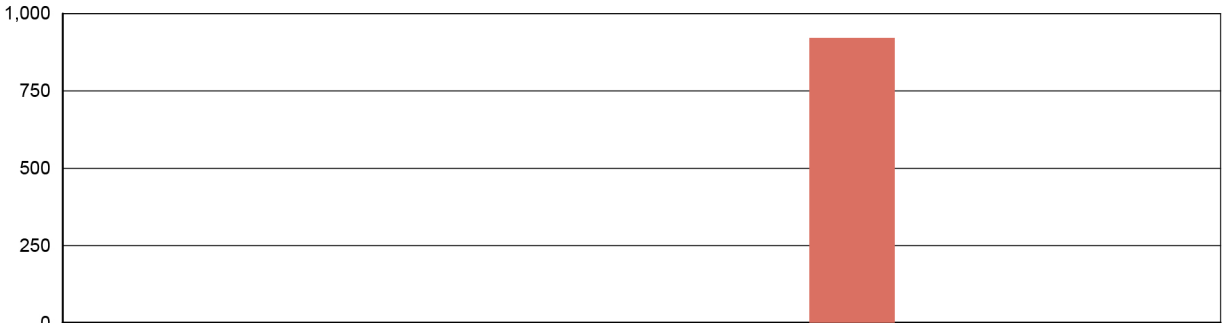
Extraction Technician: DF  
 Analytical Chemist: SH

Extraction Date(s)	Analysis Date(s)
11/20/2020	11/21/2020

Cannabinoids (HPLC)		Results	
	LOD (mg/g)	%	mg/g
Cannabidivarin (CBDV)	<0.60		
Cannabidiolic Acid (CBD-A)	<0.60		
Cannabigerolic Acid (CBG-A)	<0.60		
Cannabigerol (CBG)	<0.60		
Cannabidiol (CBD)	<0.60		
Tetrahydrocannabivarin (THCV)	<0.60		
Cannabinol (CBN)	<0.60		
delta 9-Tetrahydrocannabinol (THC)	<0.60		
delta 8-Tetrahydrocannabidol		92.10	921
Cannabichromene (CBC)	<0.60		
delta-9-Tetrahydrocannabinolic Acid (THC-A)	<0.60		
Cannabinoids Total		%	mg/g
Max Active THC		0.00	0.00
Max Active CBD		0.00	0.00
T.Active Cannabinoids		0.00	0.00
Total Cannabinoids		92.10	921.00

Following USDA guidelines on uncertainty, Altitude Consulting's uncertainty are calculated for CBDa and CBD at +/- 4%. The uncertainty for THCa and THC are +/- 5%. This implies the range for a 10% value of CBD to be 9.6-10.4%. The uncertainty range for a 0.30% value of THC would be 0.28-0.32%. The measurement uncertainty is calculated using a coverage factor of 2.

## Cannabinoid (mg/g)



<span style="color: blue;">■</span> Cannabichromene (CBC)	<span style="color: orange;">■</span> Cannabidiol (CBD)	<span style="color: teal;">■</span> Cannabidiolic Acid (CBD-A)	<span style="color: red;">■</span> Cannabidivarin (CBDV)	<span style="color: purple;">■</span> Cannabigerol (CBG)
<span style="color: yellow;">■</span> Cannabigerolic Acid (CBG-A)	<span style="color: lightblue;">■</span> Cannabinol (CBN)	<span style="color: lightcoral;">■</span> delta 8-Tetrahydrocannabidol	<span style="color: green;">■</span> delta 9-Tetrahydrocannabinol (THC)	<span style="color: pink;">■</span> delta-9-Tetrahydrocannabinolic Acid (THC-A)
<span style="color: purple;">■</span> Tetrahydrocannabivarin (THCV)				

Reporting Limits will vary based on sample extraction weight used for the analysis.  
 Altitude Consulting, LLC utilizes NIST traceable Reference Standards and Certified Reference Material to calibrate analytical instruments along with proven analytical methods. The methods are applied in the most ethical manner following good laboratory practice guidelines. The results of this report are based solely on the sample submitted and cannot be reproduced.



**Customer:** Herbal Pharm RX  
**Address:** PO Box 461  
Milliken, CO 80543  
**Sample ID:** Sugar Wax  
**Matrix:** Concentrates  
**Labnumber:** 21D0336-01

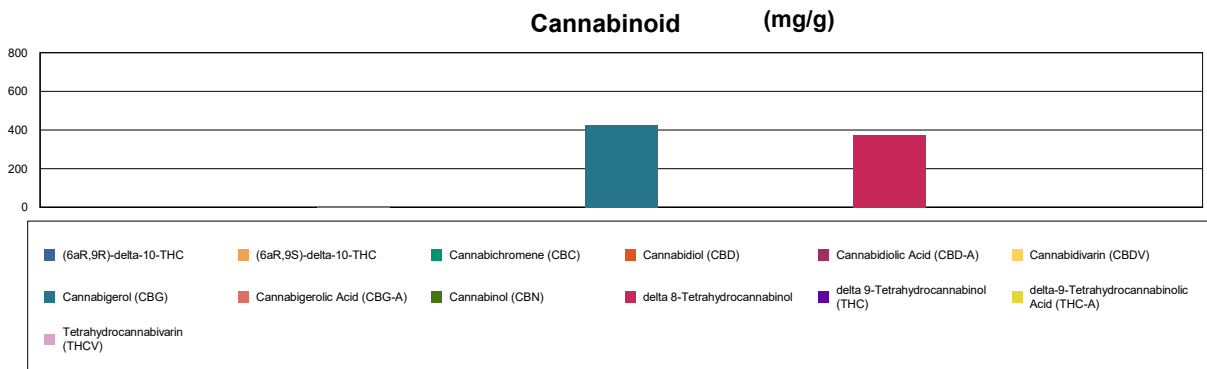
## Cannabinoid Profile

**Test Conditions:** 19°C  
**Extraction Technician:** SH  
**Analytical Chemist:** CB

Extraction Date(s)	Analysis Date(s)
4/28/2021	4/28/2021

Cannabinoids (HPLC)	Results		
	LOD (mg/g)	%	mg/g
Cannabidivarin (CBDV)		0.05	0.548
Cannabidiolic Acid (CBD-A)	<0.40		
Cannabigerolic Acid (CBG-A)	<0.40		
Cannabigerol (CBG)		42.55	425
Cannabidiol (CBD)		0.12	1.15
Tetrahydrocannabivarin (THCV)	<0.40		
Cannabinol (CBN)	<0.40		
Cannabichromene (CBC)	<0.40		
delta 9-Tetrahydrocannabinol (THC)	<0.40		
delta-9-Tetrahydrocannabinolic Acid (THC-A)	<0.40		
delta 8-Tetrahydrocannabinol		37.43	374
(6aR,9S)-delta-10-THC	<0.40		
(6aR,9R)-delta-10-THC	<0.40		
<b>Cannabinoids Total</b>		<b>%</b>	<b>mg/g</b>
Max Active THC (delta-9-tetrahydrocannabinol)		0.00	0.00
Max Active CBD		0.12	1.15
T.Active Cannabinoids		42.70	427.00
Total Cannabinoids		80.10	801.00

Following USDA guidelines on uncertainty, Altitude Consulting's uncertainty is calculated to be +/- 2% for all cannabinoids using a coverage factor of 2 (95% confidence interval). Measurement uncertainty has not been factored into reported values.  
Blank results indicate the compound was below the limit of detection.




**Gary Brook - Laboratory Director - 4/29/2021**

Reporting Limits will vary based on sample extraction weight used for the analysis.

The results of this report are based solely on the sample submitted and cannot be reproduced. Decision Rule: Measurement uncertainty is not accounted for in the reported values. Results are based solely on calculated numbers. Altitude Consulting makes no Statements of conformity. **Pesticide, metal, and microbial analyses are subcontracted to ISO 17025 laboratories.**



**Customer:** Herbal Pharm RX  
**Address:** PO Box 461  
Milliken, CO 80543  
**Sample ID:** Diamonds  
**Matrix:** Concentrates  
**Labnumber:** 21D0336-02

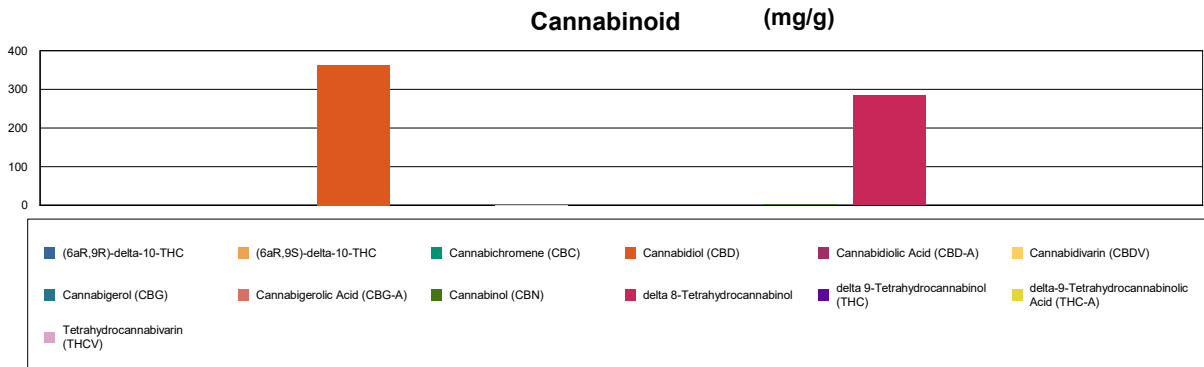
## Cannabinoid Profile

**Test Conditions:** 19°C  
**Extraction Technician:** SH  
**Analytical Chemist:** CB

Extraction Date(s)	Analysis Date(s)
4/28/2021	4/28/2021

Cannabinoids (HPLC)		Results	
	LOD (mg/g)	%	mg/g
Cannabidivarin (CBDV)		0.19	1.86
Cannabidiolic Acid (CBD-A)	<0.40		
Cannabigerolic Acid (CBG-A)	<0.40		
Cannabigerol (CBG)	<0.40		
Cannabidiol (CBD)		36.31	363
Tetrahydrocannabivarin (THCV)	<0.40		
Cannabinol (CBN)		0.29	2.90
Cannabichromene (CBC)	<0.40		
delta 9-Tetrahydrocannabinol (THC)	<0.40		
delta-9-Tetrahydrocannabinolic Acid (THC-A)	<0.40		
delta 8-Tetrahydrocannabinol		28.45	284
(6aR,9S)-delta-10-THC	<0.40		
(6aR,9R)-delta-10-THC	<0.40		
Cannabinoids Total		%	mg/g
Max Active THC (delta-9-tetrahydrocannabinol)		0.00	0.00
Max Active CBD		36.30	363.00
T.Active Cannabinoids		36.60	366.00
Total Cannabinoids		65.20	652.00

Following USDA guidelines on uncertainty, Altitude Consulting's uncertainty is calculated to be +/- 2% for all cannabinoids using a coverage factor of 2 (95% confidence interval). Measurement uncertainty has not been factored into reported values.  
Blank results indicate the compound was below the limit of detection.




**Gary Brook - Laboratory Director - 4/29/2021**

Reporting Limits will vary based on sample extraction weight used for the analysis.

The results of this report are based solely on the sample submitted and cannot be reproduced. Decision Rule: Measurement uncertainty is not accounted for in the reported values. Results are based solely on calculated numbers. Altitude Consulting makes no Statements of conformity. **Pesticide, metal, and microbial analyses are subcontracted to ISO 17025 laboratories.**



## Simple Organics Hemp

Northglenn, CO 80234  
 simpleorganichemp@gmail.com  
 701-721-9717

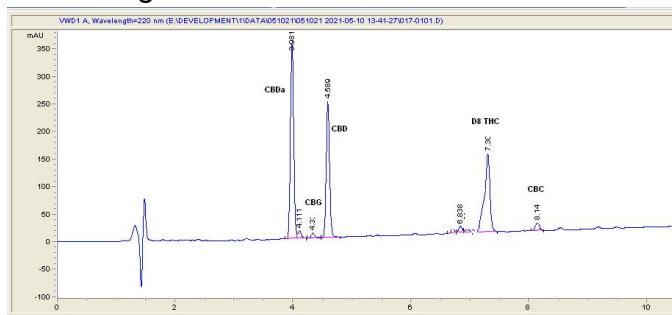
## Sample 319-051021-002

Sample #2  
 Sample Submitted: 05-10-2021; Report Date: 05-10-2021

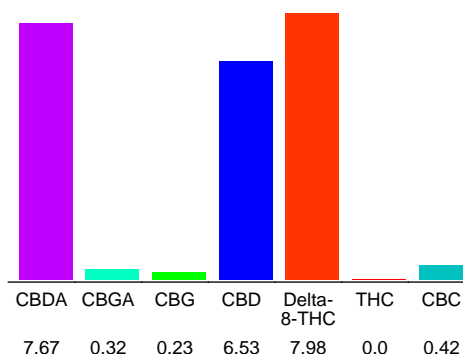
## Sample #2

Plant Material

### Chromatogram



### Cannabinoid Profile



### Cannabinoid Profile by HPLC

**0.00%**  
 Calculated THC Yield

**13.26%**  
 Calculated CBD Yield

**23.15%**  
 Total Cannabinoids

Cannabinoid	% wt	mg/g
CBDA	7.67	76.7
CBGA	0.32	3.2
CBG	0.23	2.3
CBD	6.53	65.3
Delta-8-THC	7.98	79.8
THC	0.0	0.0
CBC	0.42	4.2
<b>Total Cannabinoids</b>	<b>23.15</b>	<b>231.5</b>
<b>Calculated THC Yield</b>	<b>0.00</b>	<b>0.00</b>
<b>Calculated CBD Yield</b>	<b>13.26</b>	<b>132.57</b>

Calculated Maximum THC Yield =  $THC + 0.877 * THCA$   
 Calculated Maximum CBD Yield =  $CBD + 0.877 * CBDA$

**Marin Analytics, LLC**  
 250 Bel Marin Keys Blvd, Suite D4  
 Novato, CA 94949  
 415-936-6477 / sarabiancalana1@gmail.com

*Sara Biancalana*  
**Sara Biancalana**  
 Chief Scientist

This sample has been tested by Marin Analytics, LLC using valid testing methodologies and a quality system. Values reported relate only to the sample tested. Marin Analytics, LLC makes no claims as to the efficacy, safety or other risks associated with any detected or non-detected levels of any compounds reported herein. This Certificate shall not be reproduced except in full, without the written approval of Marin Analytics, LLC.